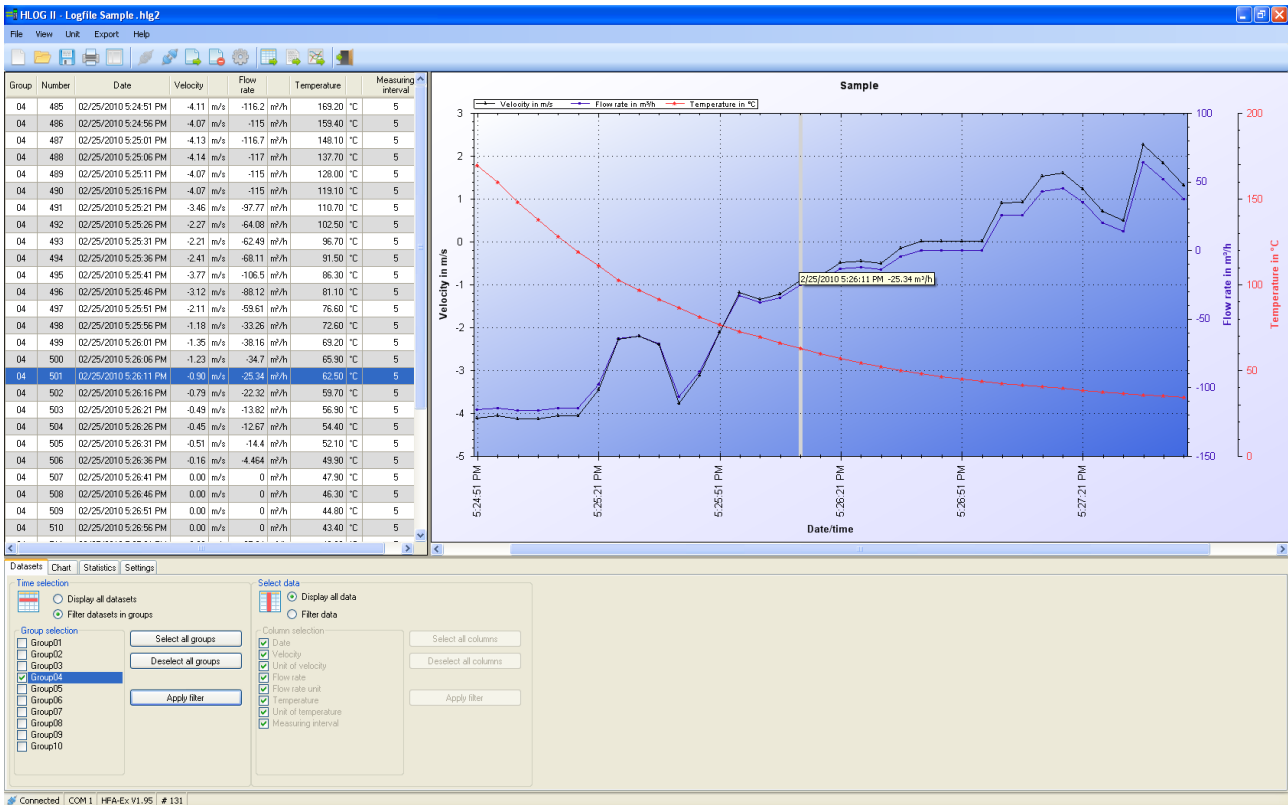


**PC software for Höntzsch hand-held units for configuration, readout and processing of measured data**



**Datalogger**

HLOG II allows readout of the data saved to the handheld unit.

**Display**

The transferred data can be displayed numerically in a spreadsheet which can be formatted and also as an interactive line chart.

**Saving data**

All data can be permanently archived under an individual identifier.

**Configuration**

With the HLOG II all settings can be readout, changed and saved. Individual linearising of characteristics for reducing measurement uncertainty is easily done on the PC.

**Data exchange**

XLS or CSV files can be generated to export numerical data. Charts are exported as JPG file.

**Print-out**

Spreadsheets, charts, settings and pairs of values can be printed. Fit the data to size if necessary before printing.

**Statistics functions**

- number of rows (groups)
- number of data sets
- total time of all measurements
- min. value
- max. value
- average

## Compatibility

Data exchange is possible with the following Höntzsch units:

- flowtherm Ex
- flowtherm NT.2
- flowtherm NT
- HTA, HTA-Ex
- HFA, HFA-Ex
- HVA

Software version 1.9 upwards is necessary for full use of the HLOG II functions in Höntzsch HxA units. A software update can be carried out by Höntzsch.

## PC / handheld unit connection

The handheld units flowtherm Ex, flowtherm NT.2 and flowtherm NT are equipped with a USB interface with which they can be connected directly to a PC. HFA, HFA-Ex, HTA, HTA-Ex and HVA have an RS232 interface. Here a special adapter cable is necessary for connecting to a PC. A Höntzsch converter is available for converting an RS232 to a USB interface.

## System requirements

- Windows 98 (SP2), later version recommended
- at least Pentium III
- 256 MB RAM, 512 MB recommended
- approx. 100 MB free memory on the hard drive

## Menu navigation

German, English, Japanese

## Prompts

User assistance via the help function. Retrieval of information such as Data Sheets and Operating Instructions.

## Order information / Accessories

	Art. No.
<b>Software set HLOG II (flowtherm Ex, flowtherm NT.2, flowtherm NT)</b> configuration of handheld unit and displaying data on a PC, data export as XLS and CSV file, chart export as JPG file, incl. 1.8 m USB cable and carrying case	A000/522
<b>Software set HLOG II (HTA-Ex, HFA, HFA-Ex, HVA)</b> configuration of handheld unit and displaying data on a PC, data export as XLS and CSV file, chart export as JPG file, incl. 1.5 m RS-232 connection cable and carrying case, connector 680-6 / D-SUB 9-pin	A000/520
<b>Software set HLOG II (HTA)</b> configuration of handheld unit and displaying data on a PC, data export as XLS and CSV file, chart export as JPG file, incl. 1.5 m RS-232 connection cable case, connector 680-8 / D-SUB 9-pin	A000/521
<b>Software update HLOG to HLOG II</b>	A000/525
<b>Interface converter USB/RS232</b>	A010/100

## Höntzsch GmbH & Co. KG

Gottlieb-Daimler-Straße 37  
D-71334 Waiblingen

Tel: +49 7151 / 17 16-0

Fax: +49 7151 / 5 84 02

Internet [www.hoentzsch.com](http://www.hoentzsch.com)